

oakheart



£70,000

Offers In Excess Of
Hythe Hill, Colchester



This well-presented one-bedroom apartment is ideally located on Hythe Hill, a popular residential area close to Colchester's vibrant town centre. Offered with no onward chain, it is perfect for first-time buyers, investors, or anyone seeking a low-maintenance home in a convenient setting.

Situated on an elevated position leading down toward The

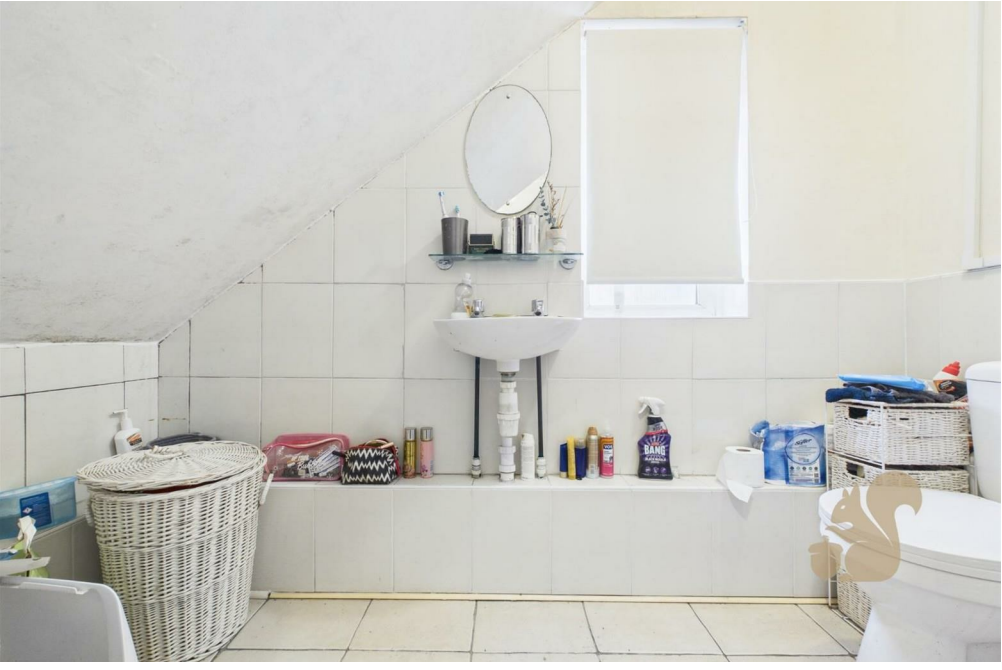
Hythe and the River Colne, the property offers excellent access to local shops, cafés, and everyday amenities. The University of Essex is within easy reach, making the location especially attractive to students and professionals. Hythe Hill also benefits from strong public transport links, with regular bus routes nearby and Hythe Station providing direct rail connections to Colchester's mainline services.

Inside, the apartment features a bright living area, a fitted kitchen, a comfortable double bedroom, and a modern bathroom. The property benefits from secure entry access and low-running costs. Please note that there is no allocated parking with this apartment.

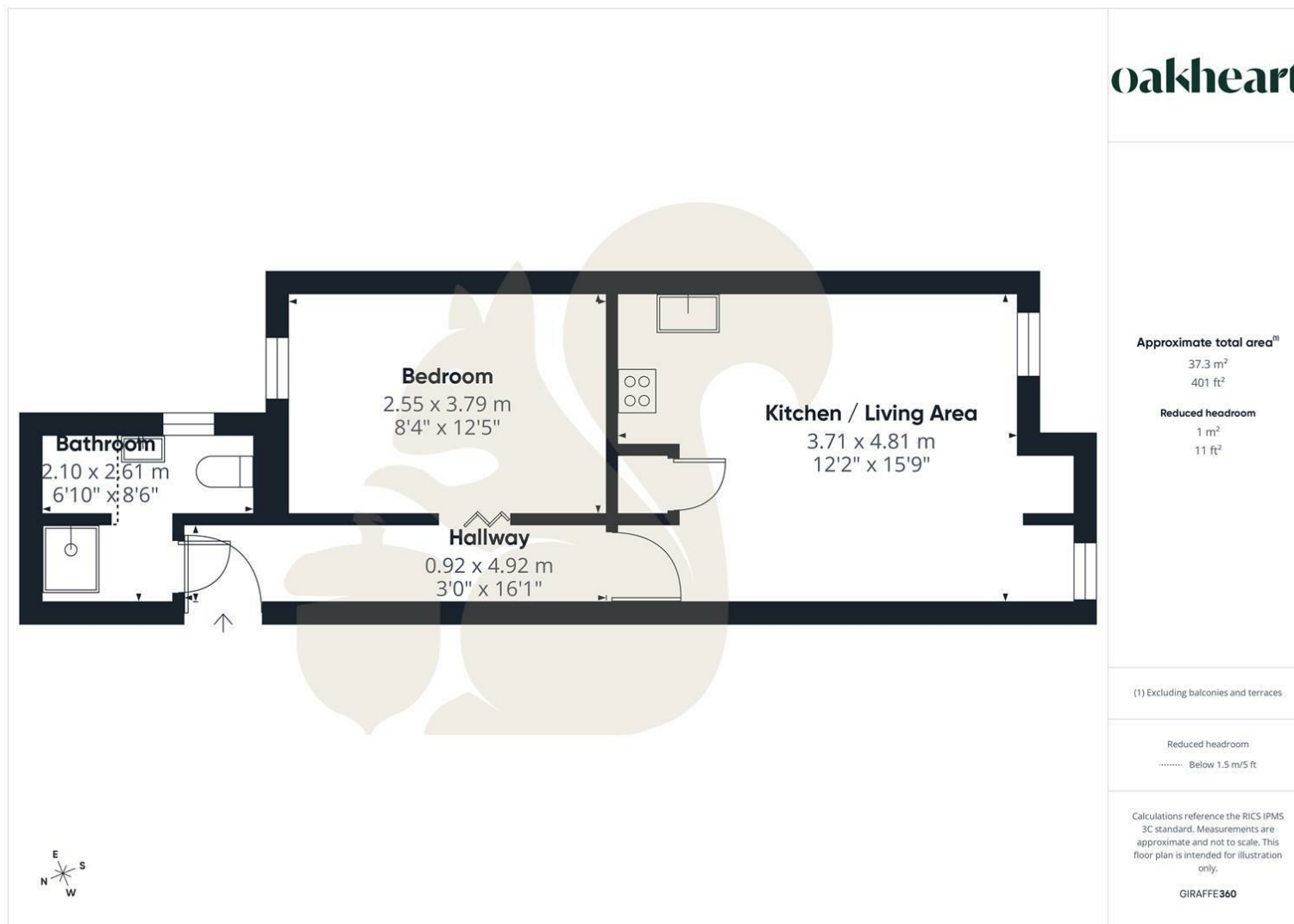
A great opportunity to purchase a well-located home with immediate availability and excellent local convenience.











Local Authority:
Colchester

Tenure:
Leasehold

Council Tax Band:
A

Energy Efficiency Rating

	Current	Potential
Very energy efficient - lower running costs		
(92 plus) A		
(81-91) B		
(69-80) C		75
(55-68) D	65	
(39-54) E		
(21-38) F		
(1-20) G		
Not energy efficient - higher running costs		
England & Wales EU Directive 2002/91/EC		

Agents Note: Whilst every care has been taken to prepare these particulars, they are for guidance purposes only. All measurements are approximate and are for general guidance purposes only and whilst every care has been taken to ensure their accuracy, they should not be relied upon.

Oakheart Colchester
01206 803 308
colchester@oakheart.co.uk
2b Cotman Road, Colchester, Essex, CO3 4QJ

oakheart